



Phone: +(61) 04 13 996682  
www.budclothing.com.au  
email: bud@budclothing.com.au

**Here are some common product Size guides.**

**Download these and simply refer the page you want for the pattern type.**

**We have over 600 patterns and simply unable to list all of them here.**

**If you need to see more go to our “Products and Downloads” tab**

**(On [www.budclothing.com.au/hto.html](http://www.budclothing.com.au/hto.html)) and refer “product info” and “Product Specs”**

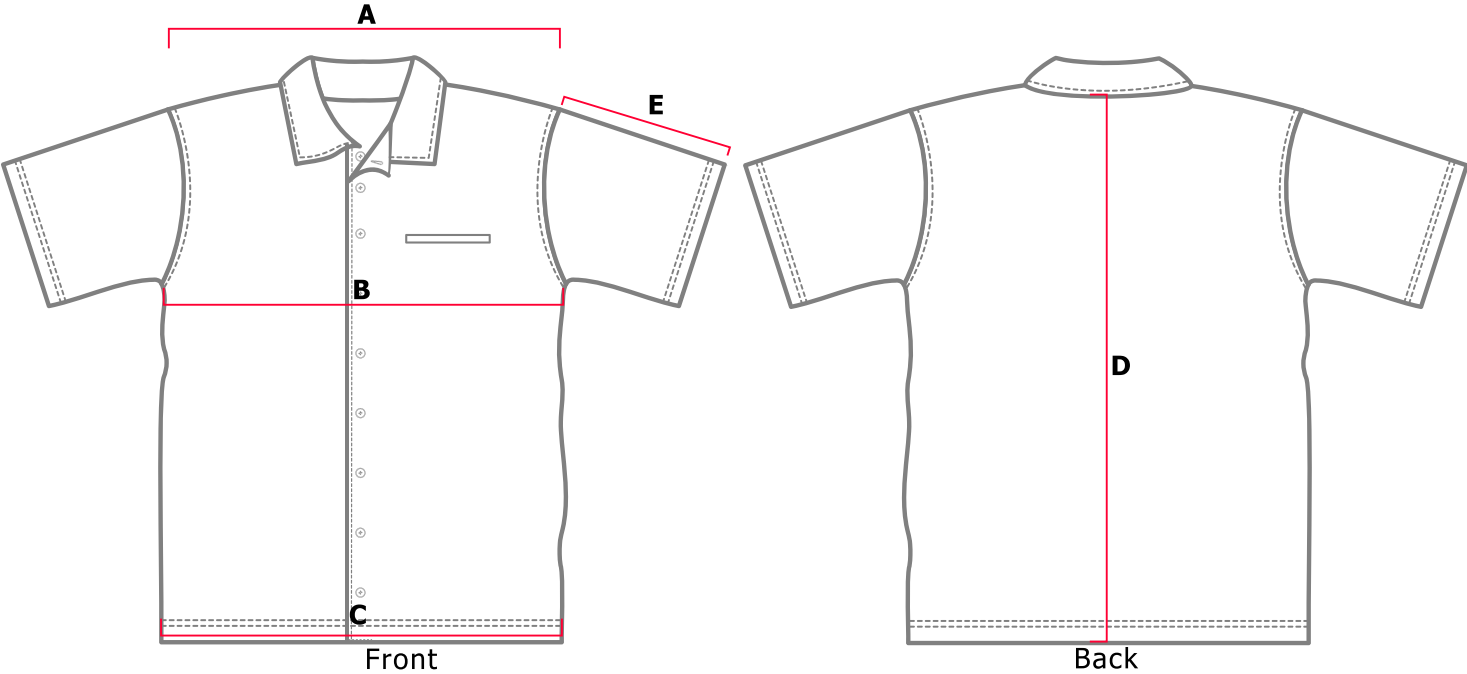
**Please remember to read and understand the “Order processing Flow chart” and FAQ before ordering.**

**“Thank you and Happy Creating Clothing with us”**



# GARMENT SPECIFICATION

047 - Button Down S/S - Mens - Adult



Measurements in cms

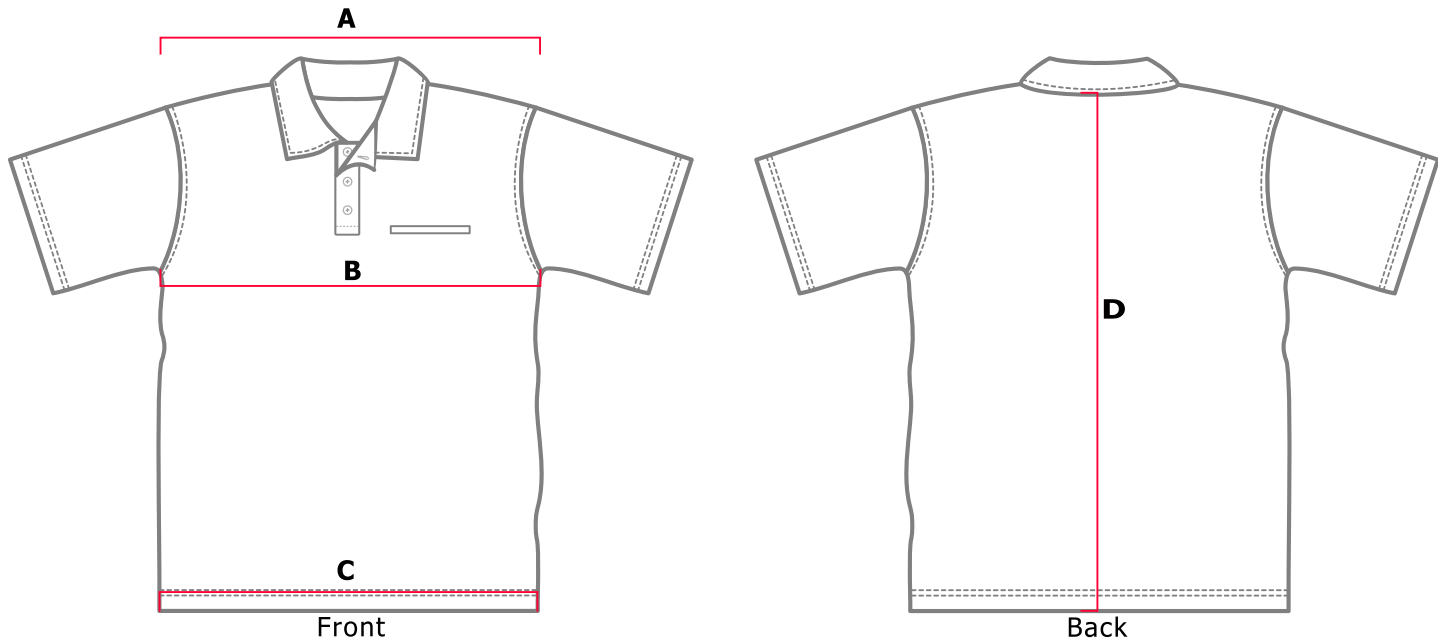
SIZES											
	XS	S	M	L	XL	2XL	3XL	4XL	5XL	6XL	7XL
A. Shoulder	42	46	48	51	54	56	59	61	64	67	69
B. Chest	53	56	59	61	64	67	69	71	74	77	79
C. Hem	53	56	59	61	64	67	69	71	74	77	79
D. Centre back	71	72	73	75	78	82	86	89	92	94	96
E. Sleeve length	23	24	24	25	26	26	27	28	28	29	30

Tolerance +/- 1.0 cm



# GARMENT SPECIFICATION

052 (005) - Polo S/S - Unisex - Adult



Measurements in cms

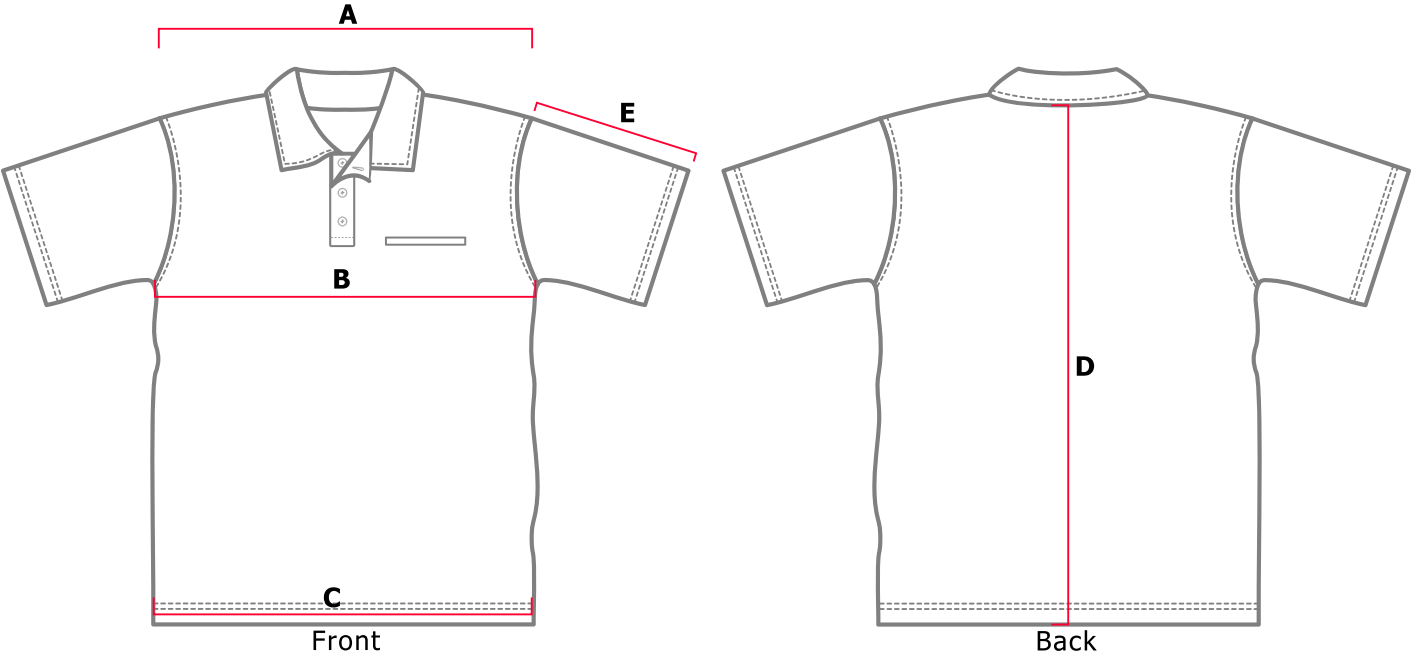
SIZES									
	XS	S	M	L	XL	2XL	3XL	4XL	5XL
A. Shoulder	48	50	52	54	56	58	60	62	64
B. Chest	51	53	56	58	61	65	69	73	77
C. Hem	50	52	55	57	60	64	68	72	76
D. Centre back	68	70	73	75	78	82	86	89	93
E. Sleeve length	22	23	24	25	26	27	29	30	31

Tolerance +/- 1.0 cm



# GARMENT SPECIFICATION

054 - Polo S/S - Mens - Adult



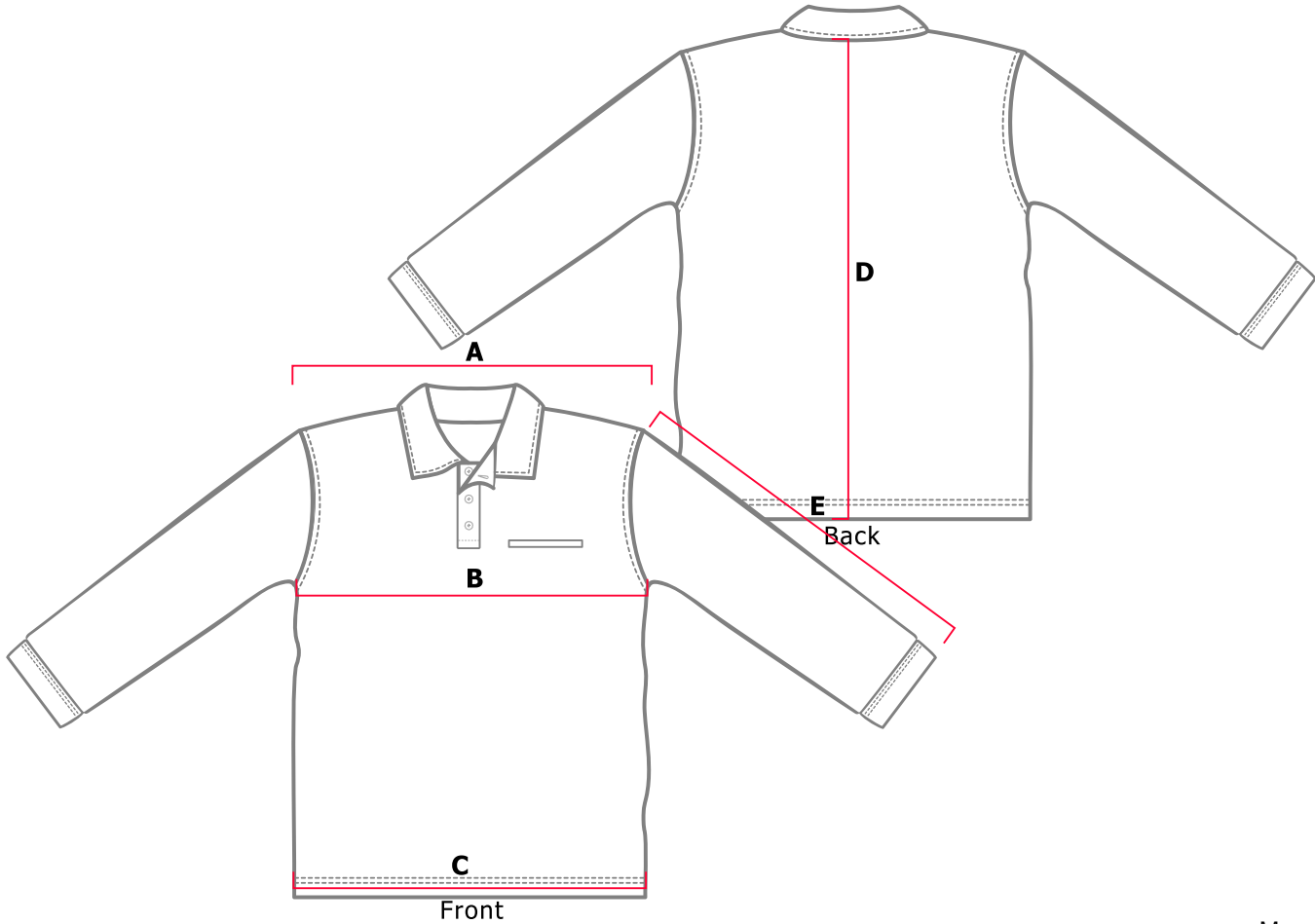
Measurements in cms														
SIZES														
	3XS	2XS	XS	S	M	L	XL	2XL	3XL	4XL	5XL	6XL	7XL	8XL
A. Shoulder	38	40	42	46	48	51	54	56	59	61	64	67	69	71
B. Chest	48	50	53	56	59	61	64	67	69	71	74	77	79	81
C. Hem	48	50	53	56	59	61	64	67	69	71	74	77	79	81
D. Centre back	69	70	71	72	73	75	78	82	86	89	92	94	96	98
E. Sleeve length	21	22	23	24	24	25	26	26	27	28	28	29	30	30

Tolerance +/- 1.0 cm



# GARMENT SPECIFICATION

055 - Polo L/S - Mens - Adult



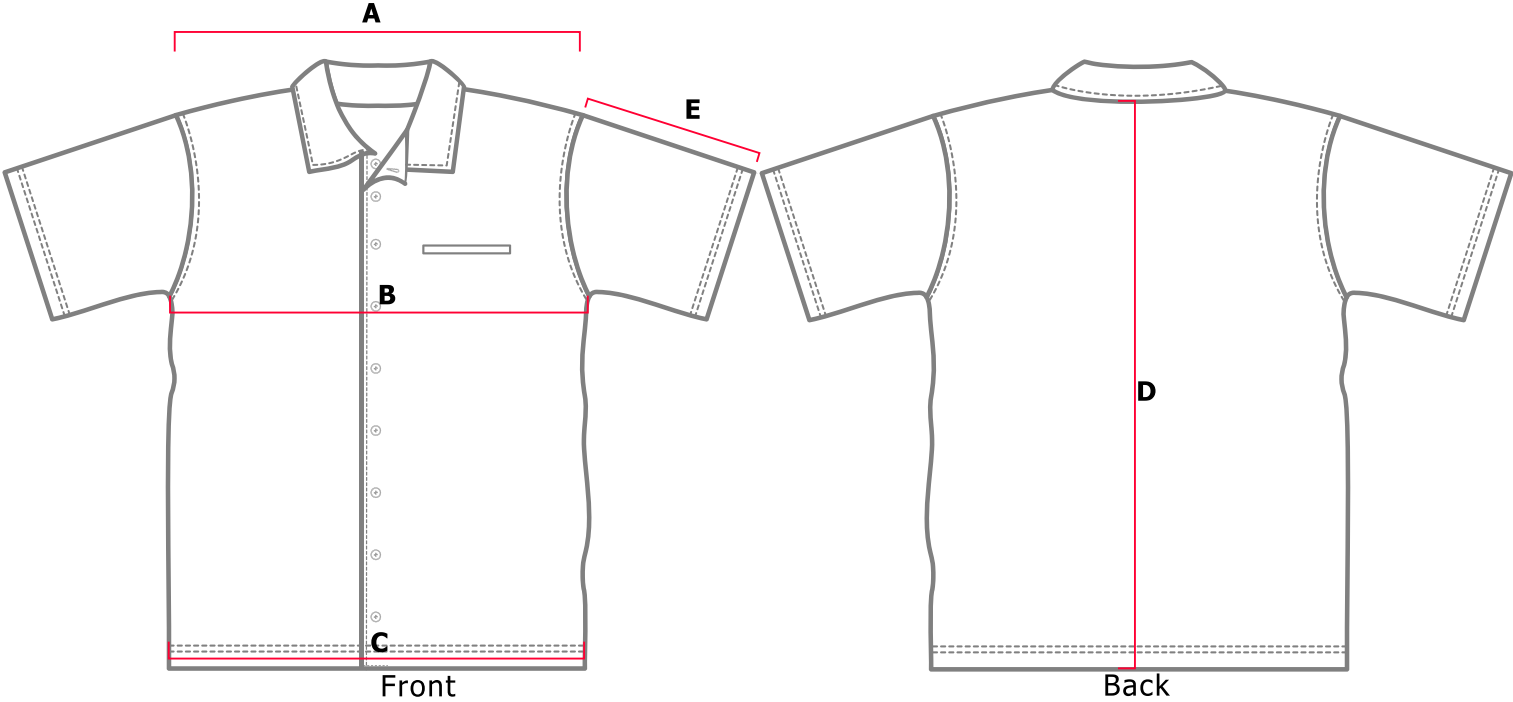
Measurements in cms														
	SIZES													
	3XS	2XS	XS	S	M	L	XL	2XL	3XL	4XL	5XL	6XL	7XL	8XL
A. Shoulder	38	40	42	46	48	51	54	56	59	61	64	67	69	71
B. Chest	48	50	53	56	59	61	64	67	69	71	74	77	79	81
C. Hem	48	50	53	56	59	61	64	67	69	71	74	77	79	81
D. Centre back	69	70	71	72	73	75	78	82	86	89	92	94	96	98
E. Sleeve length	51	52	53	54	56	57	59	60	62	62	62	62	62	62

Tolerance +/- 1.0 cm



# GARMENT SPECIFICATION

057 - Button Down S/S - Unisex - Adult



Measurements in cms

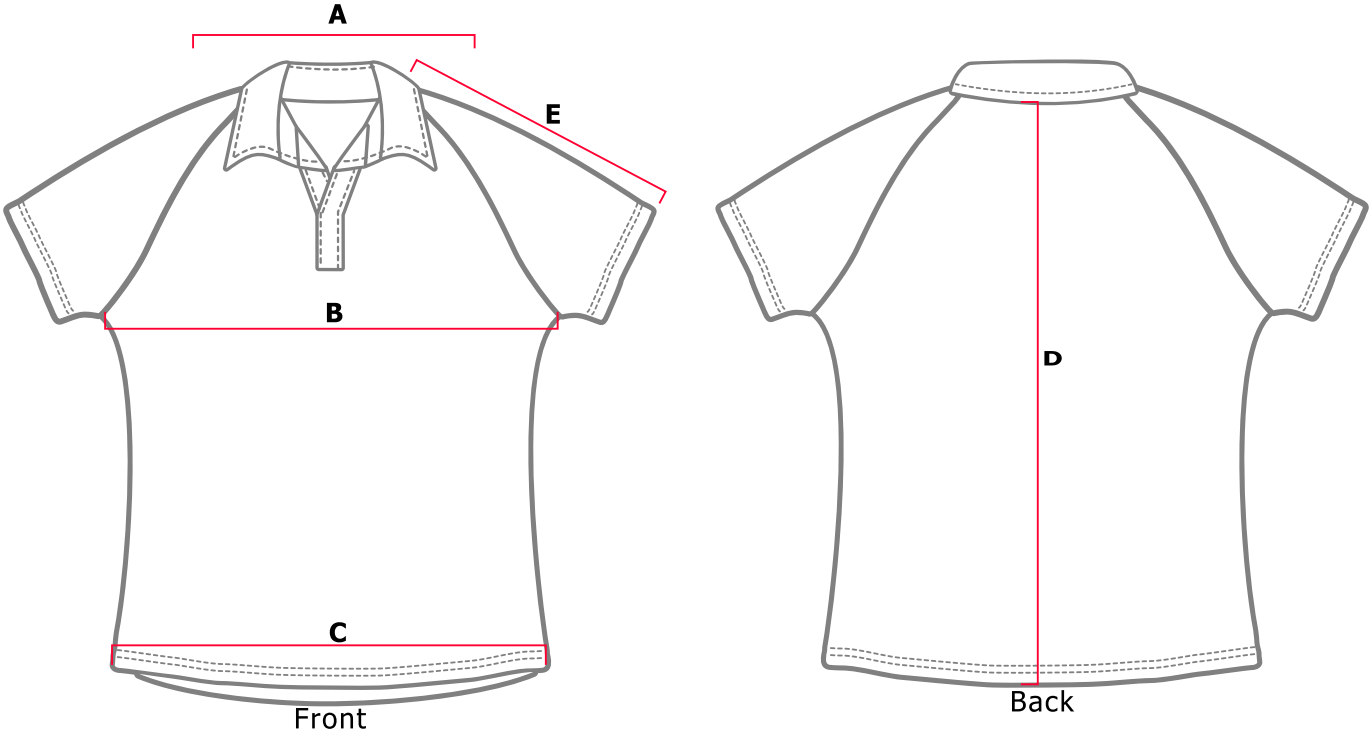
SIZES									
	XS	S	M	L	XL	2XL	3XL	4XL	5XL
A. Shoulder	48	50	52	54	56	58	60	62	64
B. Chest	51	53	56	58	61	65	69	73	77
C. Hem	50	52	55	57	60	64	68	72	76
D. Centre back	68	70	73	75	78	82	86	89	93
E. Sleeve length	22	23	24	25	26	27	29	30	31

Tolerance +/- 1.0 cm



# GARMENT SPECIFICATION

061 - Polo Raglan S/S - Ladies - Adult

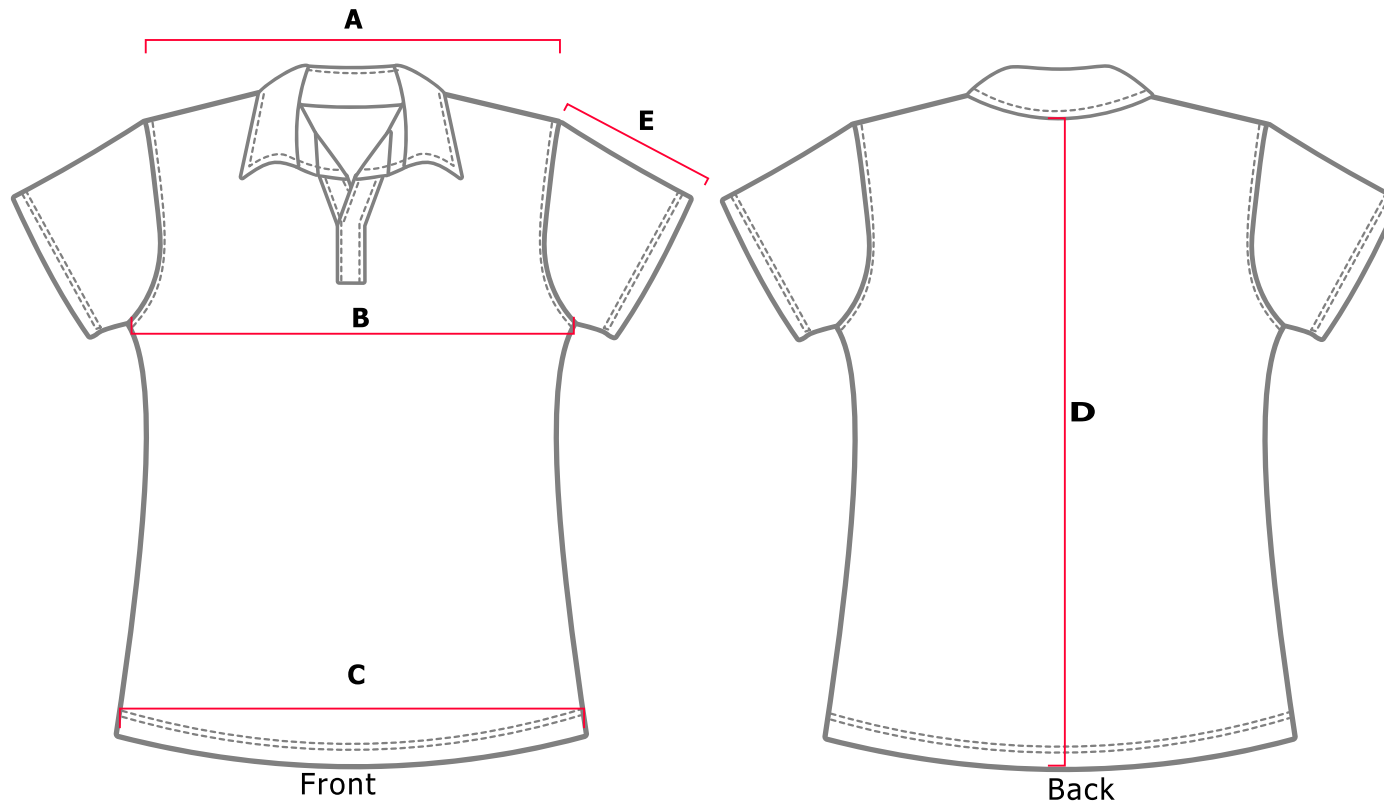


Measurements in cms											
	SIZES										
	2	4	6	8	10	12	14	16	18	20	22
A. Shoulder	32	34	36	38	40	42	44	46	48	50	52
B. Chest	41	43	45	47	49	51	53	55	58	60	63
C. Hem	41	43	45	47	49	51	53	55	58	60	63
D. Back length HPS	56	58	60	62	64	66	68	70	72	74	76
E. Sleeve length	19	21	23	25	27	29	31	33	35	37	39

Tolerance +/- 1.0 cm



099 - Polo S/S - Ladies - Adult



Measurements in cms

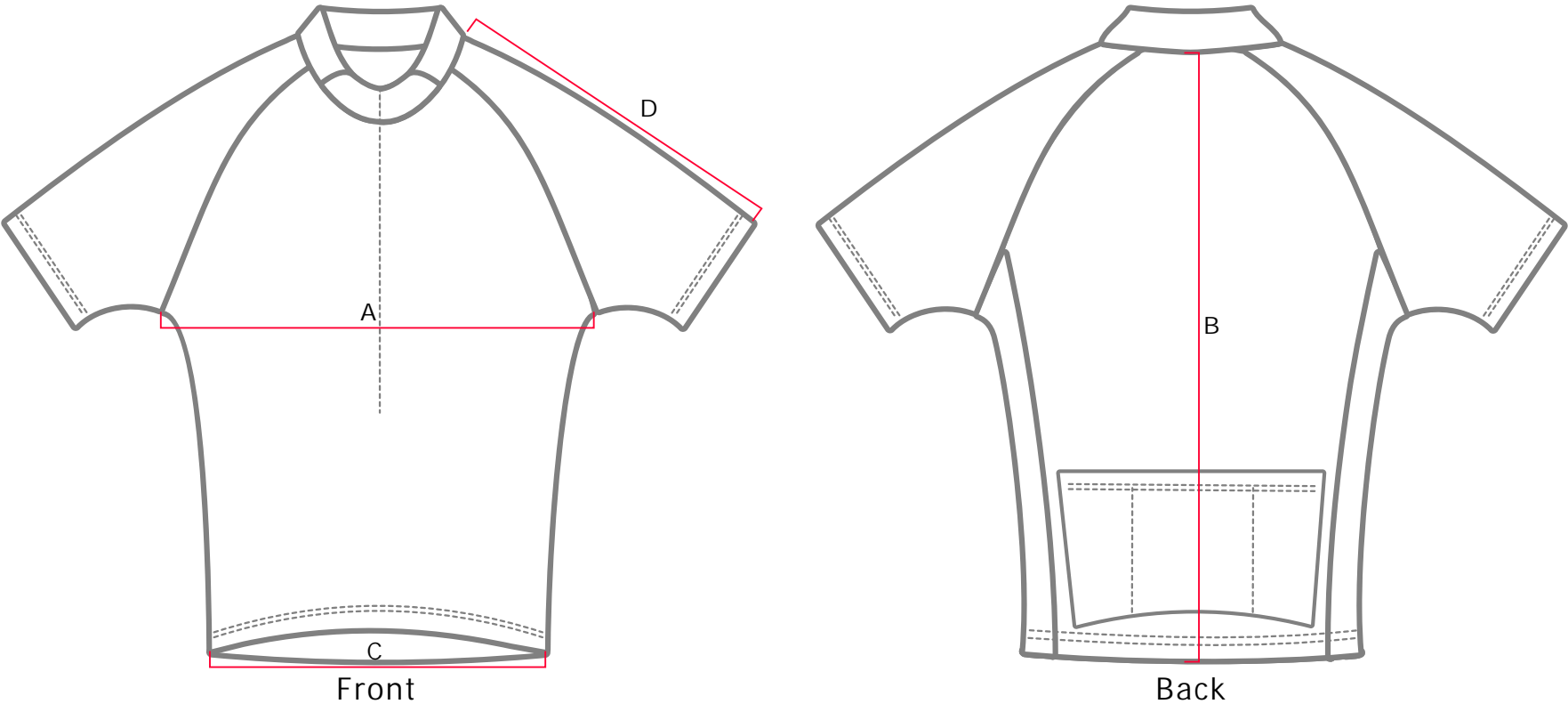
SIZES											
	2	4	6	8	10	12	14	16	18	20	22
A. Shoulder	32	34	36	38	40	42	44	46	48	50	52
B. Chest	41	43	45	47	49	51	53	55	58	60	63
C. Hem	41	43	45	47	49	51	53	55	58	60	63
D. Back length HPS	56	58	60	62	64	66	68	70	72	74	76
E. Sleeve length	11	12	13	14	15	16	17	18	19	20	21

Tolerance +/- 1.0 cm



# GARMENT SPECIFICATION

146 - Cycling Jersey S/S - Adult



Measurement in cm

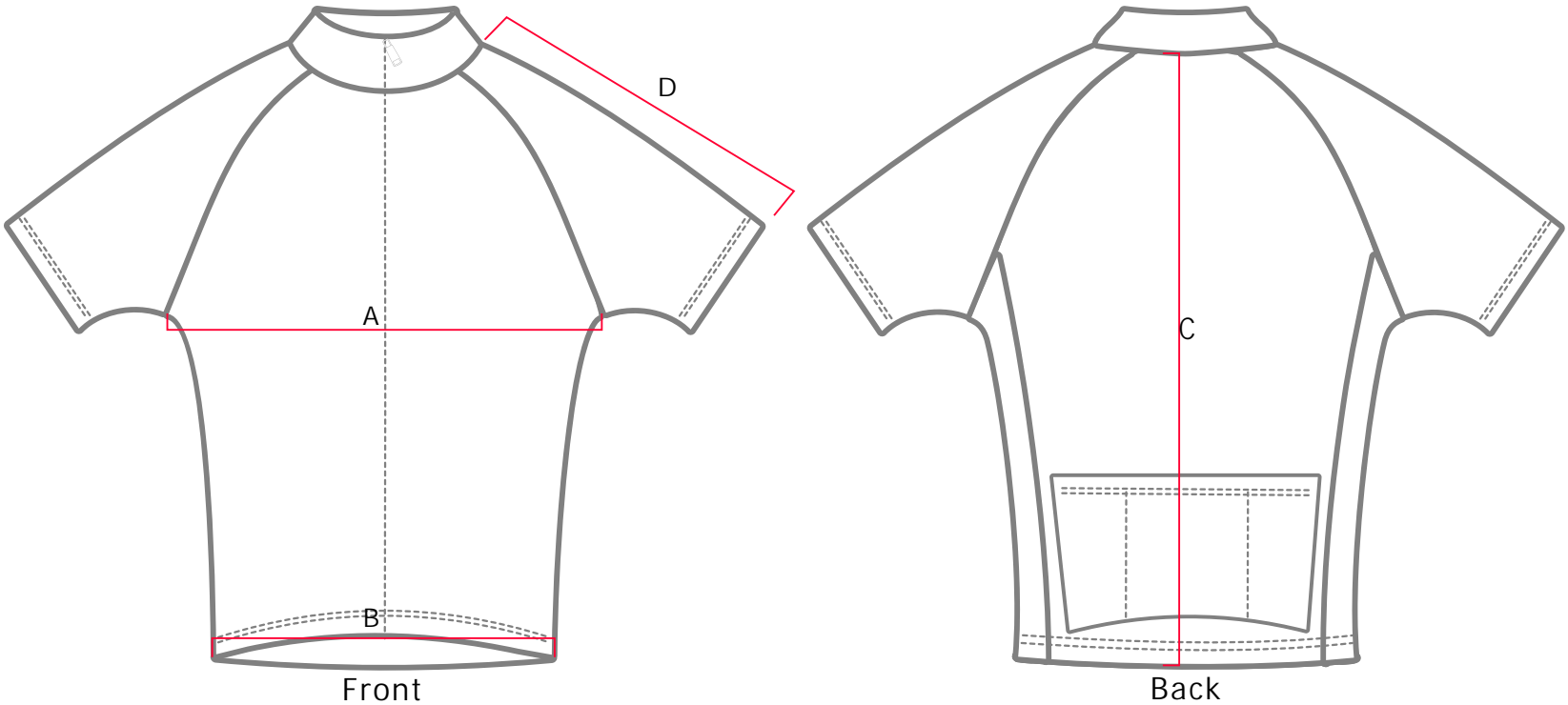
SIZES									
	XS	S	M	L	XL	2XL	3XL	4XL	5XL
A. 1/2 Chest	45	48	50	53	55	58	60	63	65
B. Centre back length	65	67	70	73	76	78	80	82	84
C. 1/2 Hem	36	39	42	45	48	50	52	54	56
D.Sleeve length	32	34	36	38	40	42	44	46	48

Tolerance +/- 1.0 cm



# GARMENT SPECIFICATION

153 - Cycling Jersey Full zip + Standup Collar - Ladies



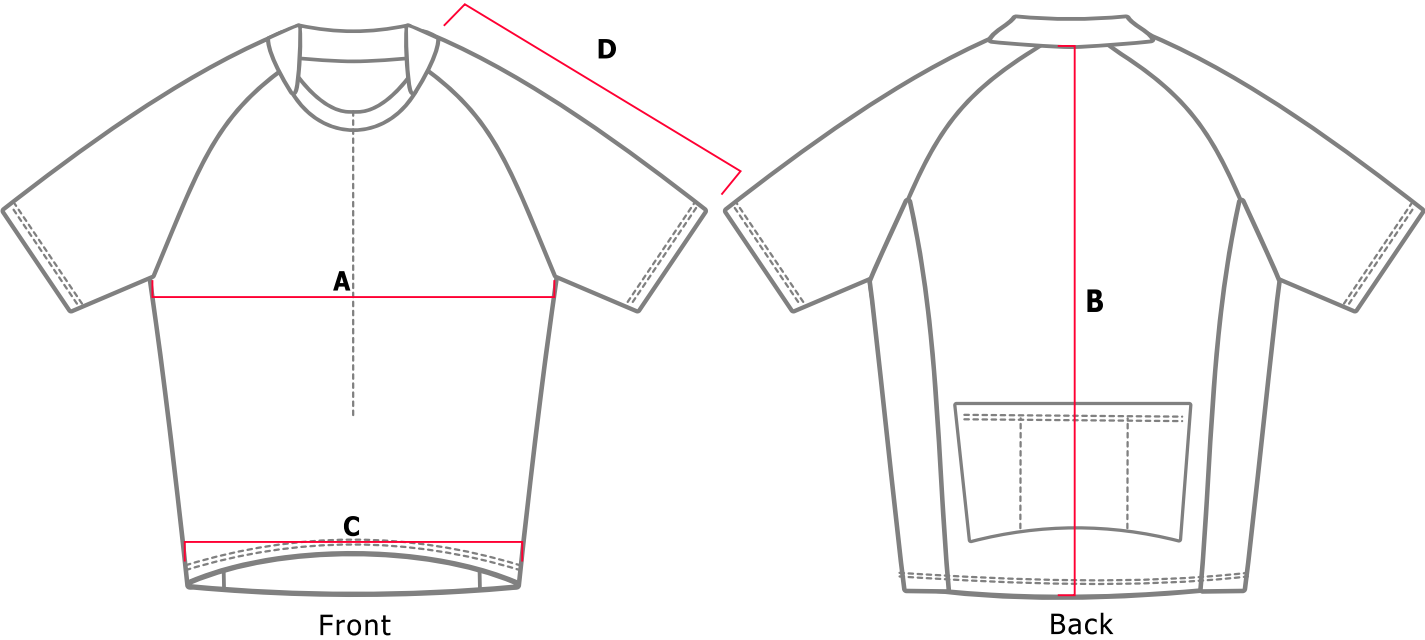
Measurements in cms									
	SIZES								
	XS	S	M	L	XL	2XL	3XL	4XL	5XL
A. 1/2 Chest	38	40	43	45	48	50	53	55	58
B. 1/2 Hem	36	38	41	43	46	48	51	53	56
C. Centre Back	57	58	59	60	61	62	63	64	65
D.Sleeve Length	27	28	29	29	30	30	31	32	32

Tolerance +/- 1.0 cm



# GARMENT SPECIFICATION

154 - Cycling Jersey S/S - Mens



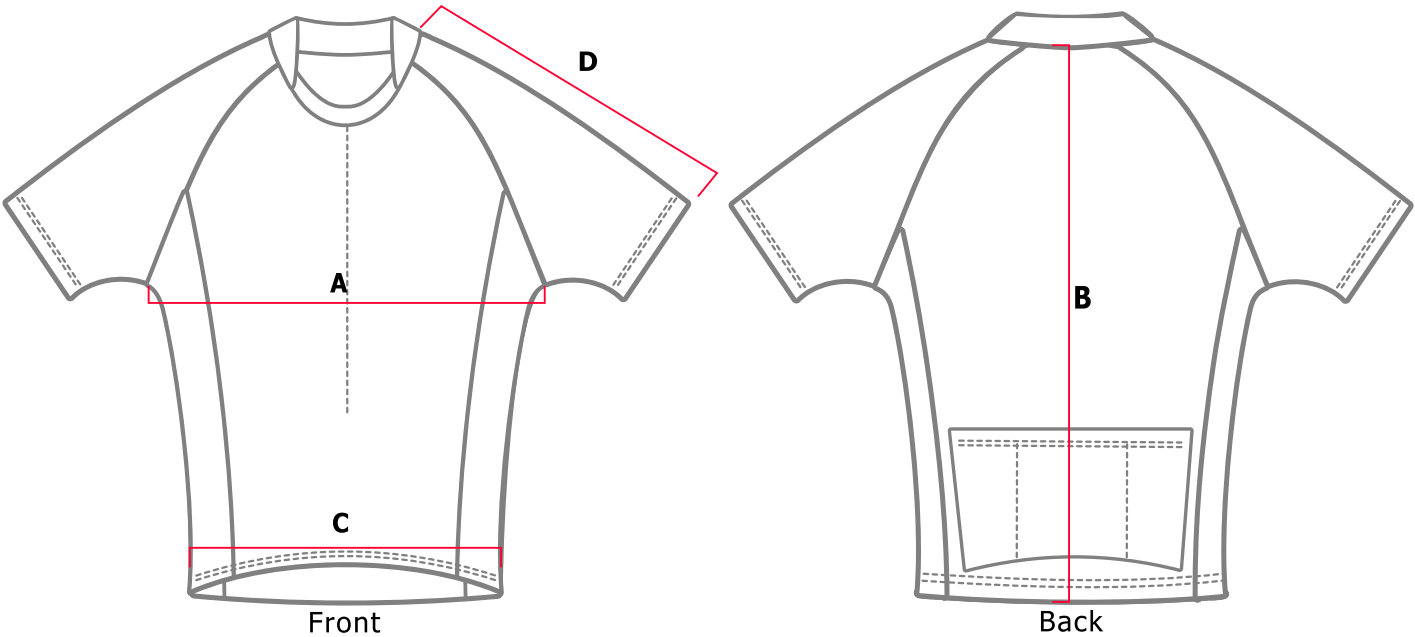
Measurements in cms								
SIZES								
	XS	S	M	L	XL	2XL	3XL	4XL
A. 1/2 Chest	46	48	51	53	55	57	60	62
B. Centre back length	63	65	67	70	72	74	76	78
C. 1/2 Hem	31	33	35	37	39	41	44	46
D.Sleeve length	36	37	38	39	40	41	42	43

Tolerance +/- 1.0 cm



# GARMENT SPECIFICATION

155 - Cycling Jersey S/S - Ladies



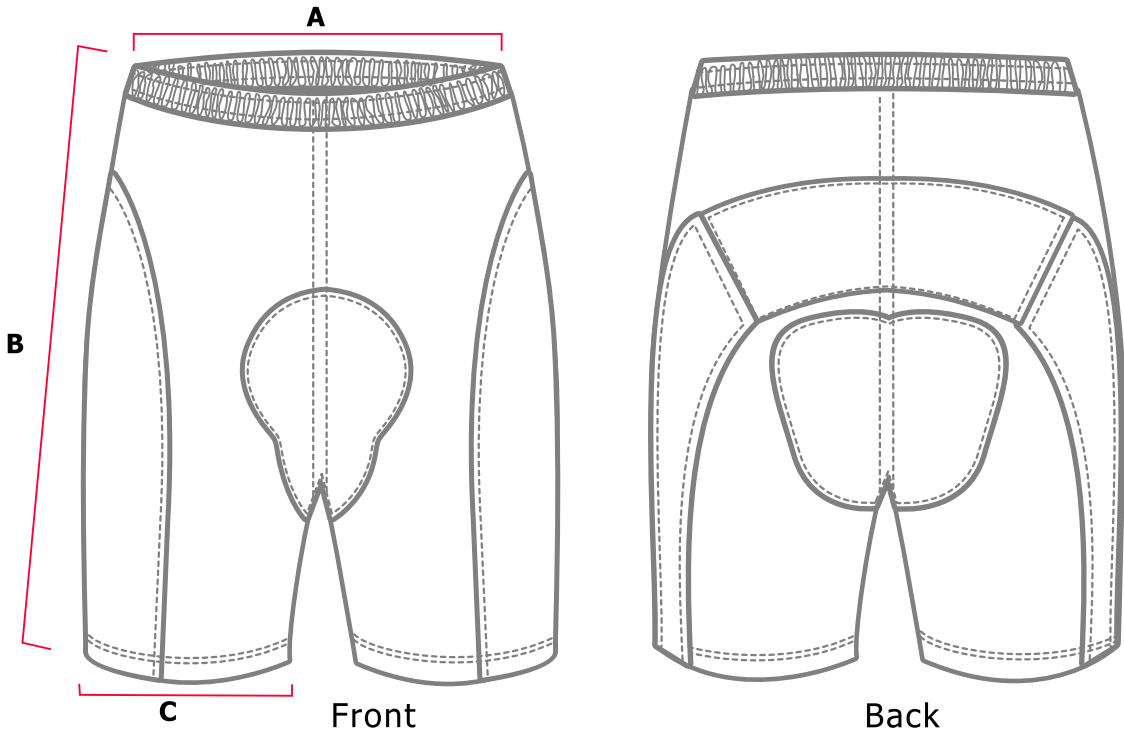
Measurements in cms								
SIZES								
	2XS	XS	S	M	L	XL	2XL	3XL
A. 1/2 Chest	41	43	45	47	49	51	53	56
B. Centre back length	57	59	61	62	63	64	66	67
C. 1/2 Hem	28	30	32	34	36	38	40	43
D.Sleeve length	27	28	29	30	31	32	33	34

Tolerance +/- 1.0 cm



# GARMENT SPECIFICATION

156 - Cycling Nicks - Mens



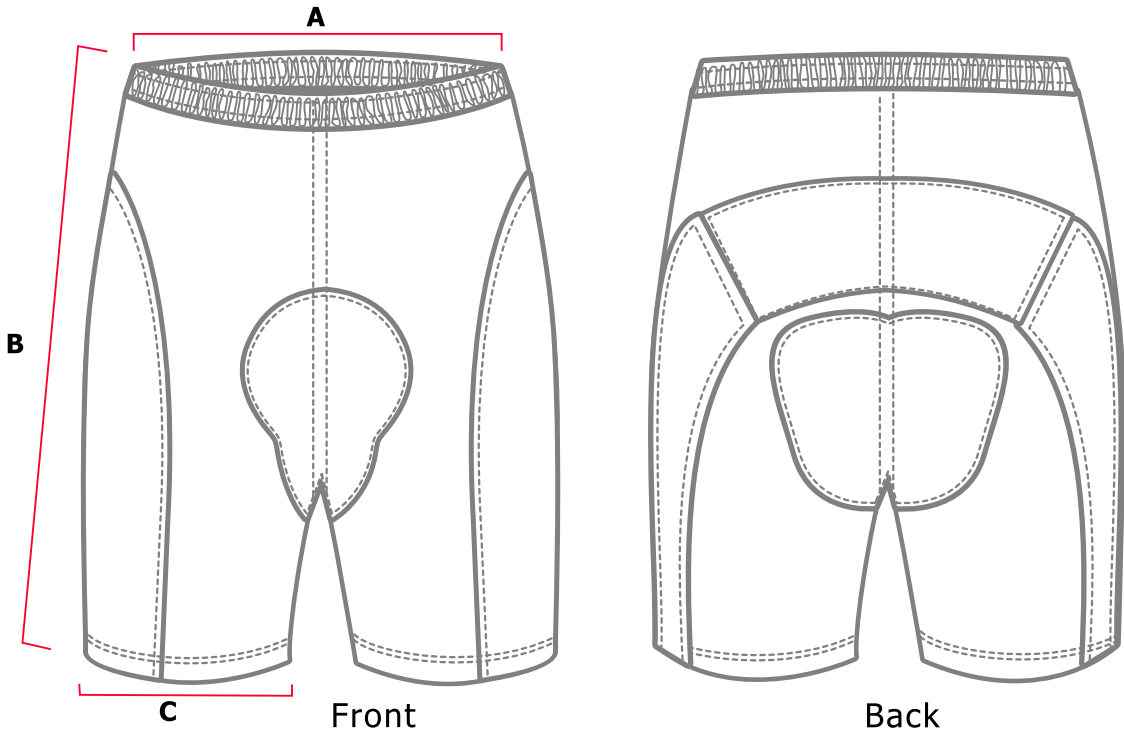
Measurement in cm								
	SIZES							
	2XS	XS	S	M	L	XL	2XL	3XL
A. 1/2Waist relaxed.	24	25	27	29	31	32	34	36
B. Side seam	38	40	42	44	46	48	49	50
C. 1/2 Leg open	17	18	19	20	21	22	23	24

Tolerance +/- 1.0 cm



# GARMENT SPECIFICATION

157 - Cycling Nicks - Ladies



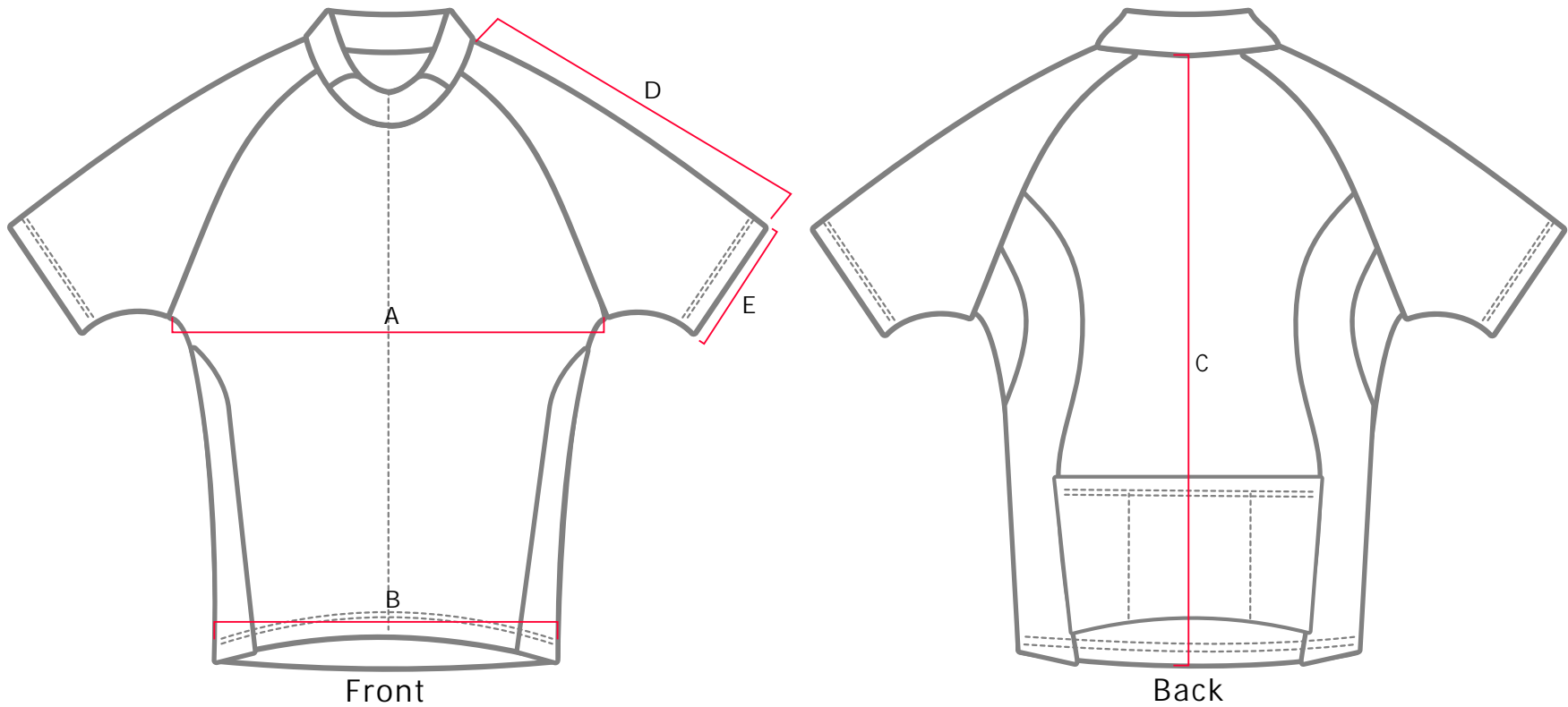
Measurement in cm							
	SIZES						
	2XS	XS	S	M	L	XL	2XL
A. 1/2Waist relaxed.	25	27	28	30	31	33	34
B. Side seam	35	37	38	39	40	41	43
C. 1/2 Leg open	16	17	19	20	21	23	24

Tolerance +/- 1.0 cm



# GARMENT SPECIFICATION

158 - Cycling Jersey S/S Full Zip - Mens



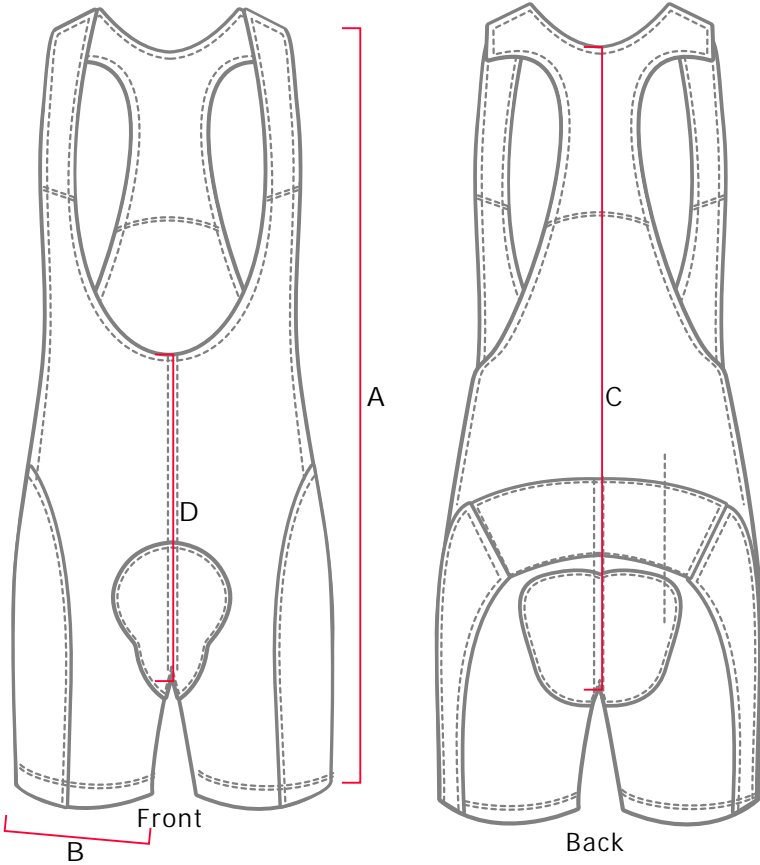
Measurements in cms									
SIZES									
	XS	S	M	L	XL	2XL	3XL	4XL	5XL
A. Chest	36	38	40	42	45	48	51	54	57
B. Hem	33	35	37	39	42	45	48	51	54
C. Centre Back	64	66	68	69	71	72	74	74	76
D. Slv Length	35	36	37	38	39	40	41	42	43
E. Slv open	12	12	13	13	14	14	15	15	16

Tolerance +/- 1.0 cm



# GARMENT SPECIFICATION

160 - Cycling Bibs - Mens



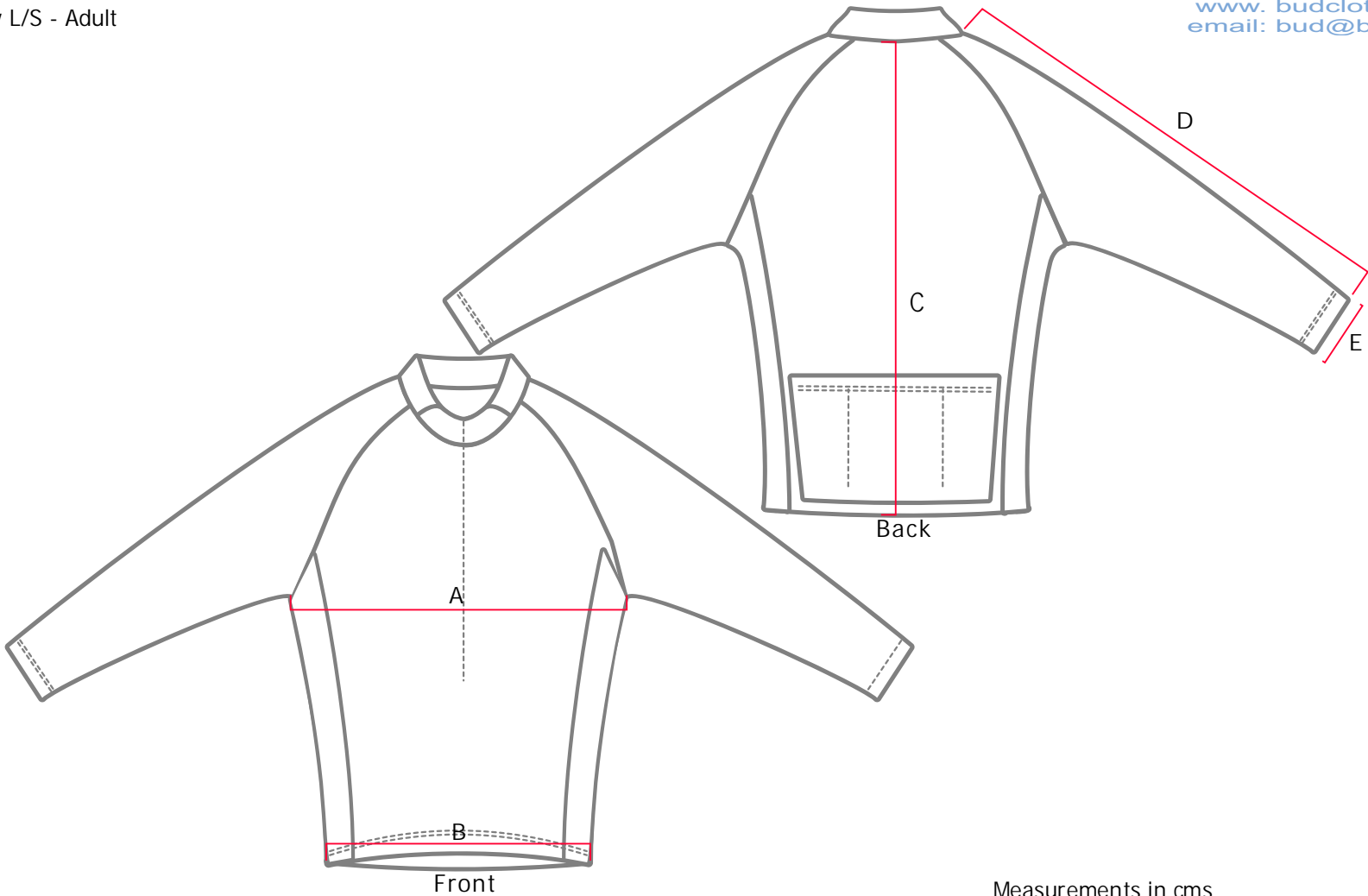
Measurements in cms									
SIZES									
	XS	S	M	L	XL	2XL	3XL	4XL	5XL
A. Side seam	44	46	49	52	54	57	59	61	63
B. (1/2) Leg open	18	19	20	22	23	24	25	26	27
C. Centre Back	63	67	70	74	77	80	83	86	89
D. Centre front	31	32	33	34	35	36	37	38	39

Tolerance +/- 1.0 cm



# GARMENT SPECIFICATION

161 - Cycling Jersey L/S - Adult



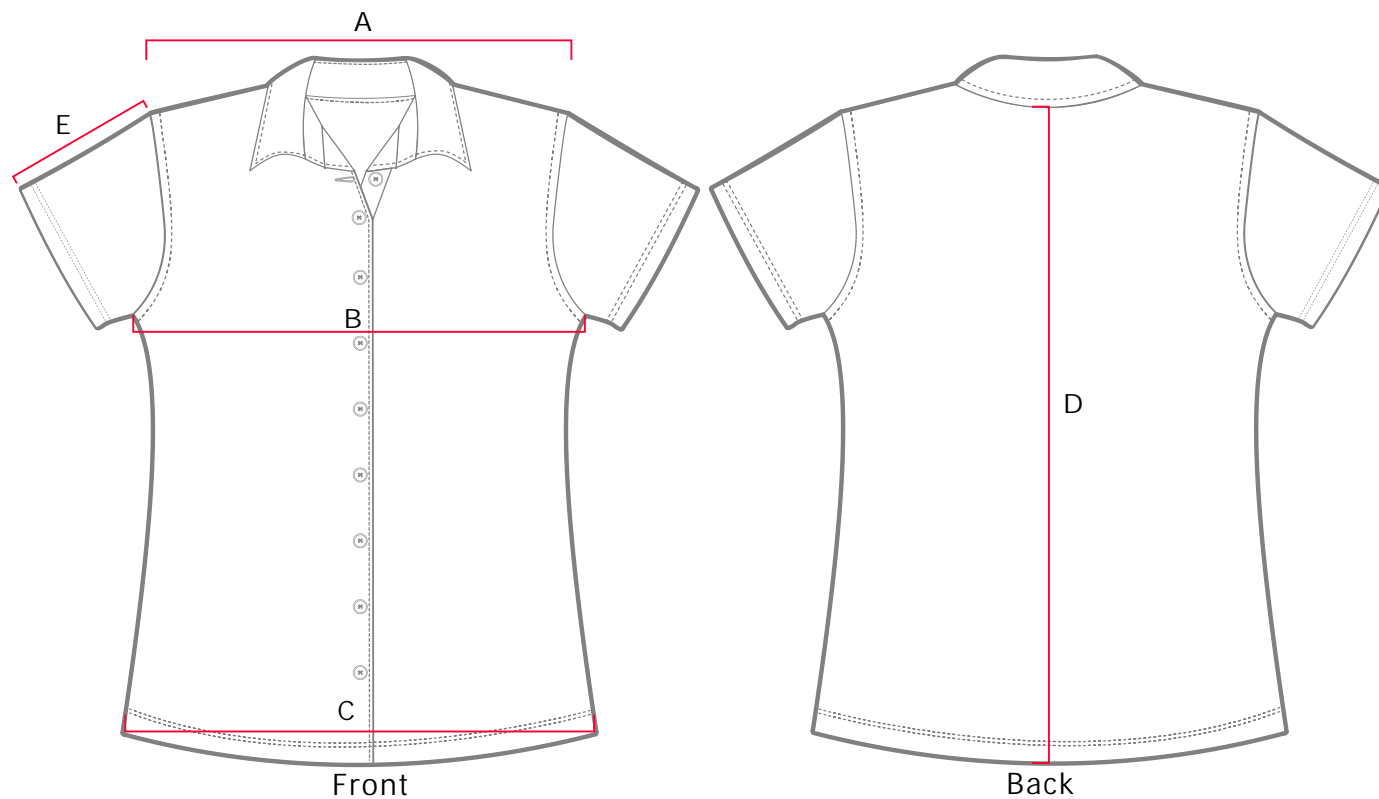
Front					Measurements in cms				
SIZES									
	XS	S	M	L	XL	2XL	3XL	4XL	5XL
A. Chest	42	44	46	51	52	53	55	57	59
B. Hem	32	34	36	41	42	43	45	47	49
C. Center back	61	63	65	70	72	73	75	77	79
D. Sleeve length	78	80	82	86	88	90	92	94	96
E. 1/2 Sleeve open	8	8	10	10	10	10	11	11	12

Tolerance +/- 1.0 cm



# GARMENT SPECIFICATION

518 - Button Up S\_S - Ladies



Measurement in cm

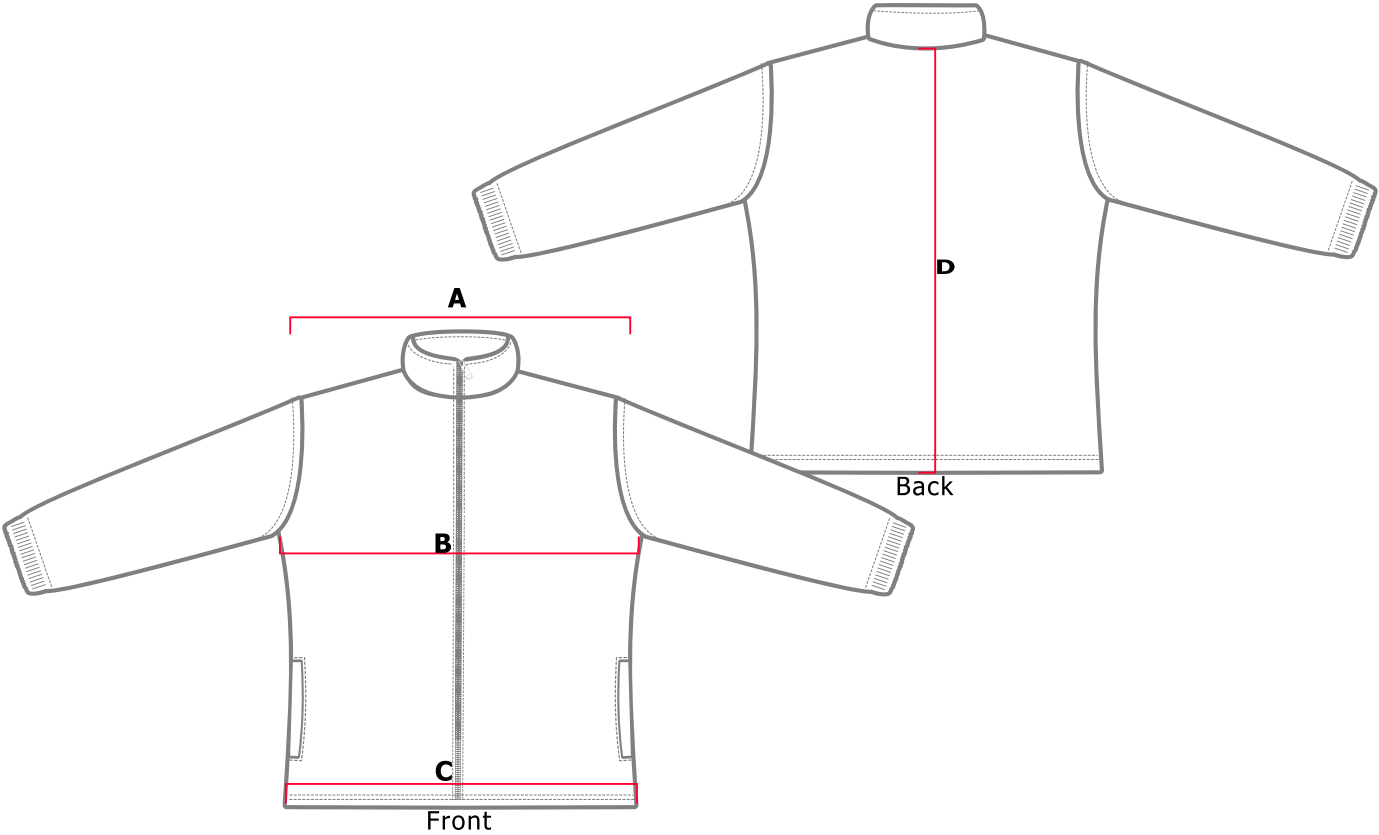
SIZES							
	4	6	8	10	12	14	16
A. Shoulder	29	32	35	38	41	44	47
B. Chest 1/2	41	44	47	50	53	56	59
C. Hem 1/2	42	45	48	51	54	57	60
D. Centre back	58	60	62	64	66	68	70
E. Sleeve length	12	13	14	15	16	17	18

Tolerance +/- 1.0 cm



# GARMENT SPECIFICATION

531 (079) - Track Jacket - Adult (Interlock Lining)



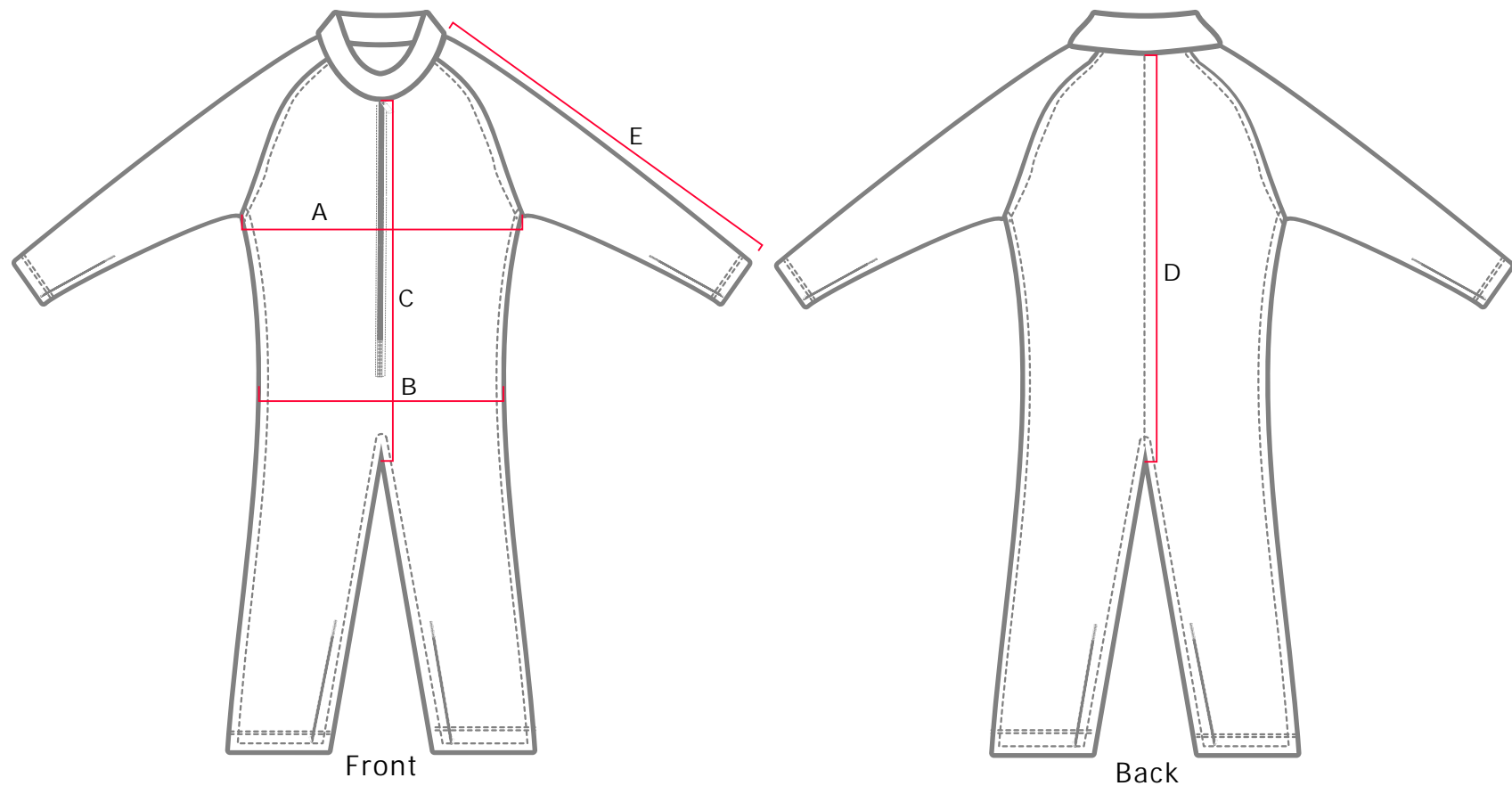
Measurements in cms											
	SIZES										
	2XS	XS	S	M	L	XL	2XL	3XL	4XL	5XL	6XL
A. Shoulder	58	60	62	64	66	68	70	72	74	76	78
B. Chest	61	63	65	67	69	71	73	75	77	79	81
C. Hem	50	52	54	56	58	60	62	64	66	68	70
D. Centre Back	65	67	69	71	73	75	77	79	81	83	85
E. Slv Length	52	53	54	55	56	57	58	59	60	61	62

Tolerance +/- 1.0 cm



# GARMENT SPECIFICATION

560 - Racing Silks - Mens - Adult

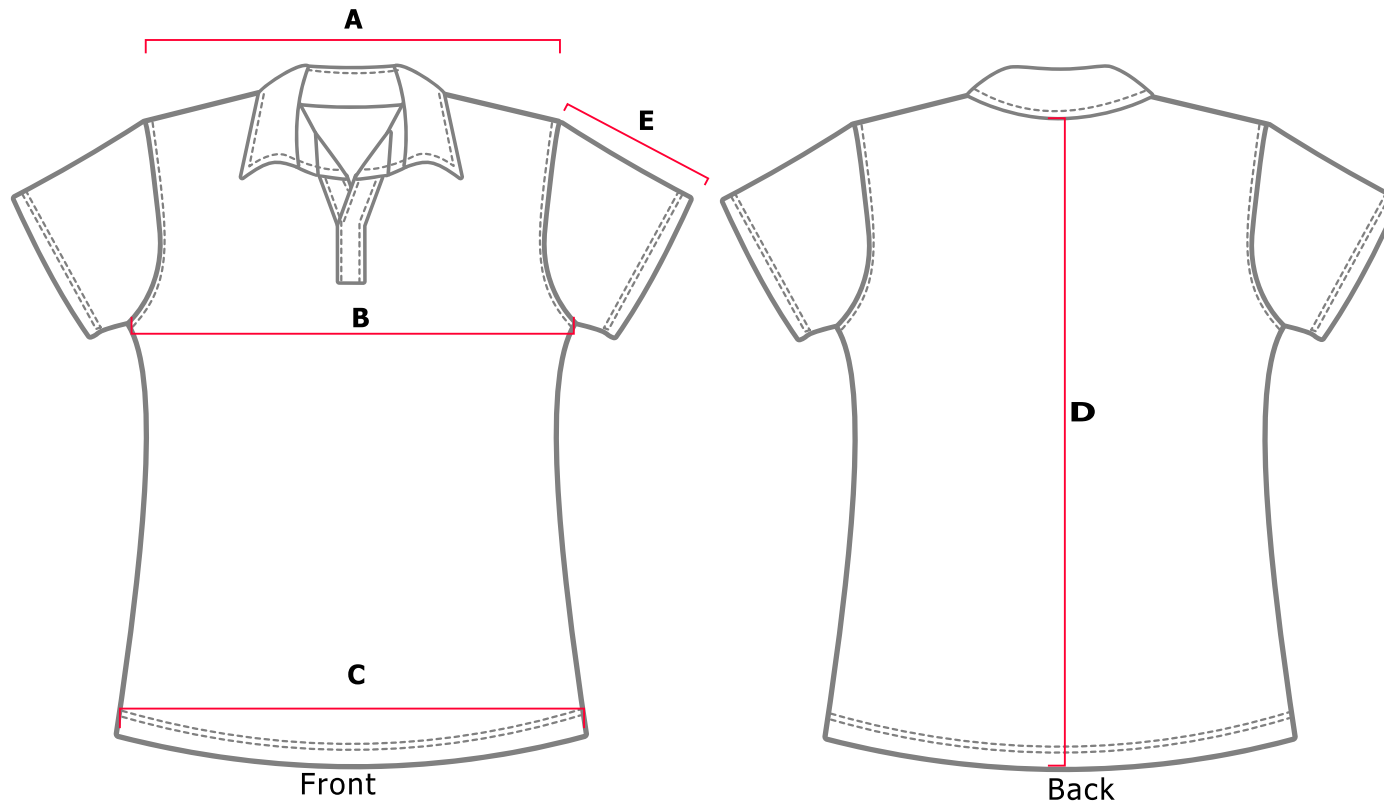


Measurement in cm

SIZES									
	XS	S	M	L	XL	2XL	3XL	4XL	5XL
A.1/2 Chest	47	49	51	53	55	57	59	61	63
B.1/2 Waist (22cm b/arm hole)	43	45	47	49	51	53	55	57	59
C.Center Front	67	69	71	73	75	77	79	81	83
D.Center Back	78	80	82	84	86	88	90	92	94
E.Sleeve Length	69	70	71	72	73	74	75	75	76



613 (113) - Polo - Ladies s s - Adult



Measurements in cms

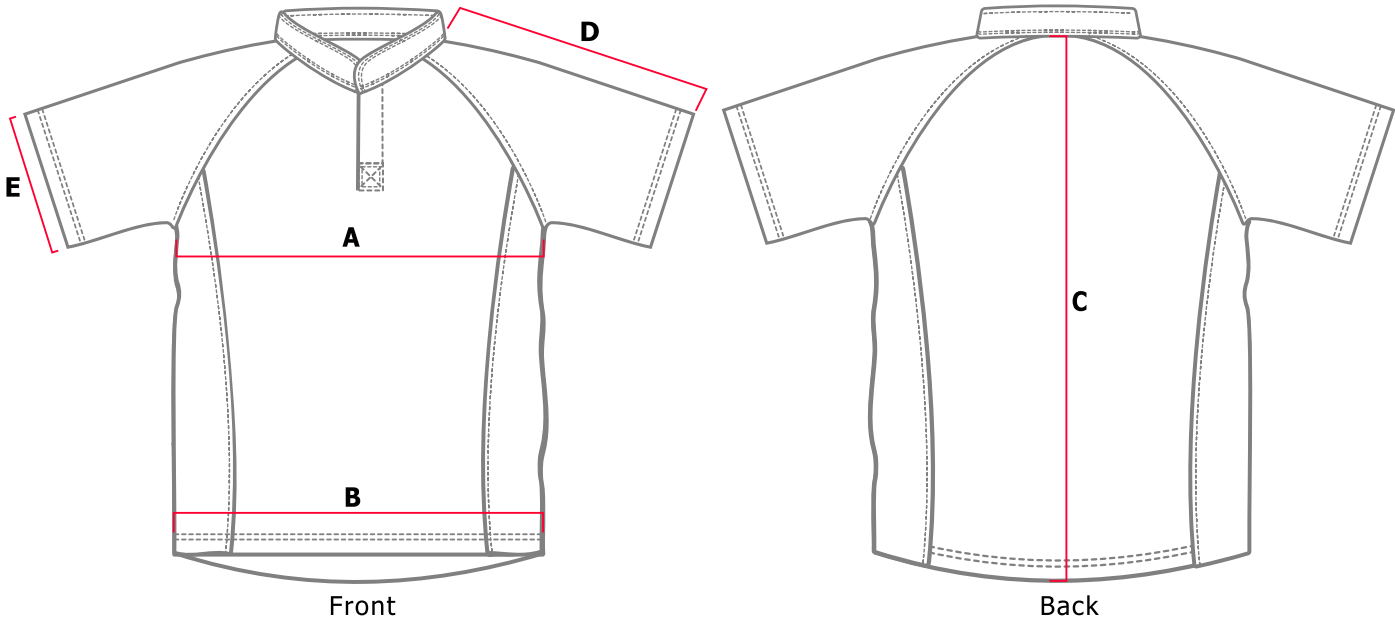
SIZES											
	3XS	2XS	XS	S	M	L	XL	2XL	3XL	4XL	5XL
A. Shoulder	39	40	41	42	43	45	46	47	48	49	51
B. Chest	40	43	45	48	51	53	55	56	59	62	65
C. Hem	41	43	45	47	49	51	53	55	58	60	63
D. Back length HPS	56	58	61	63	66	68	70	71	73	75	76
E. Sleeve length	12	13	14	15	16	17	18	19	20	21	22
F. Sleeve open	14	14	14	15	16	17	17	18	19	19	20

Tolerance +/- 1.0 cm



# GARMENT SPECIFICATION

692 - Rugby With Side Panels - Mens - Adult



Measurements in cms

SIZES									
	XS	S	M	L	XL	2XL	3XL	4XL	5XL
A. Chest	53	55	58	60	63	65	68	70	73
B. Hem	45	47	50	52	55	57	60	62	65
C. Centre back	70	72	74	76	78	80	82	84	86
D. Slv length	41	42	43	44	45	46	47	48	49
E. Sleeve open	15	16	16	17	17	18	18	19	19

Tolerance +/- 1.0 cm



## LOGO GUIDELINES

- All logos to be submitted in EPS **vector format** and saved in Illustrator CS1 compatibility (PC).
- All logo colours to be in **CMYK** colour profile. **Jet Black** to be set at C30 M30 Y30 K100 - this will print our **deepest black**.
- Fonts are to be converted to paths/curves/outlines.
- If your logo is a bitmap image then convert to **CMYK** colour profile and the resolution is to be **@ 300 dpi** of the output size. Ensure this image is no larger than 10Mb for email purposes. We also have a FTP server for files larger than 10Mb. We accept bitmap formats: Photoshop PSD, Photopaint CPT, TIFF, JPG and BMP.
- A logo **downloaded from the internet** will be in low resolution and the print quality will therefore be a poor result. Possibly, we cannot use this logo.
- PMS colours are required for specific colours, but you are welcome to send a colour sample if you desire to have the closest possible colour match, or you may prefer to use one of our many standard colours. Refer to **colour palette** on our website home page.
- Colour matching will delay the delivery time for your order.
- Colours that appear on your computer screen (are in RGB colour profile) & may look very different when printed on fabric (CMYK colour profile). In order to determine an exact colour result, we are happy to arrange a test print - free of charge.

**If you are a graphic designer and you wish to create your own design for us to print, please follow the guidelines below.**

## GUIDELINES FOR GRAPHIC DESIGNERS

- Please use our blank templates. They can be downloaded from our Enquiry Form, or contact us for a PDF version.
- All artwork is to be submitted in EPS **vector format** and saved in Illustrator CS1 compatibility (PC).
- If an object within the design is to be a bitmap or a Photoshop image, then convert the object to **CMYK** colour profile with the resolution **@ 300 dpi** of the **output size**.
- Use PMS colours as spot colours (provide special instructions informing us about the spot colours) but do not convert to CMYK due to colour shift. We will colour match this spot colour.
- To print **Jet Black** profile your object in CMYK values as C30 M30 Y30 K100 - this will print our **deepest black**.
- Remember, that because of the many components required to construct a garment, designing for apparel is very different than designing for print media.
- For example, **front panel aligning to back panel - front panel aligning to sleeves** etc. as we cannot guarantee that designs that cross seams will align correctly. We suggest you design accordingly to avoid such aligning issues.
- We use **one template** to print the full size range. For example, when printing a mens polo shirt we will use **one template** to print from size XS to 6XL.
- All graphics and objects are static - this means a logo printed on **Size Small** will be **identical in size** to a logo on **Size 6XL**. We do not scale graphics or logos per size.
- If your final design file size is less than 10Mb please email. If the file is larger than 10Mb, please contact us for our FTP server details.





#### LYCRA

- 80% polyester and 20% spandex. Specially knitted for sublimation printing
- Weight @ 220 gsm

Our high performance LYCRA is a bright white base tricot fabric which prints in extremely rich & vibrant colours and is resistant to perspiration stains. The fabric has a 4 way stretch which provides excellent dexterity allowing the wearer high comfort when participating in their chosen sport.

**"All round performance for netball, cycling, rowing, athletics & triathlon garments"**



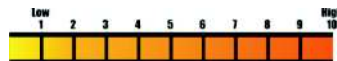
#### COTTON BACK

- 50/50 polyester & cotton specially knitted for sublimation printing
- Weight @ 165 gsm
- Hydrophilic treatment for cool/dry wear

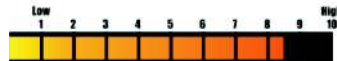
Our COTTON BACK fabric offers extremely high comfort & moderate coolness in hot/sweaty environments. It is moderately breathable & perspiration will dry moderately due to the fine filaments & hydrophilic treatment of the fabric.

**"It feels just like wearing a t-shirt".**

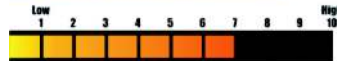
**COMFORT LEVEL**  
(the feel on the skin)



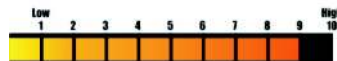
**COMFORT LEVEL**  
(coolness & moisture absorbency)



**PRINT QUALITY**  
(rich & vibrant dark colours)



**COLOUR FASTNESS**  
(non-fading colours)



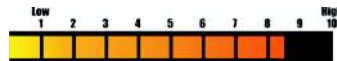
#### MICROMESH

- 100% polyester specially knitted for sublimation printing
- Weight @ 165 gsm
- Hydrophilic treatment for cool/dry wear

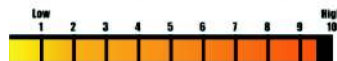
Our MICROMESH fabric offers high comfort & high coolness in hot/sweaty environments. It is extremely breathable & perspiration will dry quickly due to the fine filaments & hydrophilic treatment of the fabric.

**"A perfect balance between cool comfort & rich, vibrant colours".**

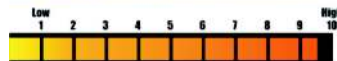
**COMFORT LEVEL**  
(the feel on the skin)



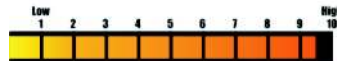
**COMFORT LEVEL**  
(coolness & moisture absorbency)



**PRINT QUALITY**  
(rich & vibrant dark colours)



**COLOUR FASTNESS**  
(non-fading colours)



#### INTERLOCK

- 100% polyester specially knitted for sublimation printing
- Weight @ 170 gsm (ideal for shirts) or 280 gsm (ideal for aussie rules & rugby)

Our INTERLOCK fabric provides the ultimate silk like substrate for high resolution images & rich vibrant colours. The 170 gsm fabric is ideal for wearing in indoor environments or short term outdoors. In the 280 gsm weight it is ideal for robust environments like aussie rules & rugby jerseys.

**"When image is everything wear interlock".**

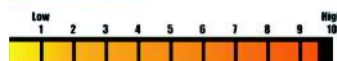
**COMFORT LEVEL**  
(the feel on the skin)



**COMFORT LEVEL**  
(coolness & moisture absorbency)



**PRINT QUALITY**  
(rich & vibrant dark colours)



**COLOUR FASTNESS**  
(non-fading colours)







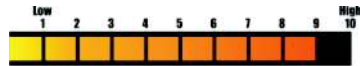
#### WOVEN POLYESTER

- 100% woven polyester specially knitted for sublimation printing
- Weight @ 90 gsm

Our WOVEN POLY fabric is ideal for a corporate image or to provide a more formal appearance than traditional fabrics. It is light, cool and prints with extremely high resolution and rich vibrant colours.

“ A premium fabric for the discerning wearer”.

**COMFORT LEVEL**  
(the feel on the skin)



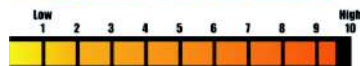
**COMFORT LEVEL**  
(coolness & moisture absorbency)



**PRINT QUALITY**  
(rich & vibrant dark colours)



**COLOUR FASTNESS**  
(non-fading colours)



#### POLYESTER TAFETTA

- 100% woven polyester specially knitted for sublimation printing
- Weight @ 140 gsm
- Light showerproof protection from water.

A woven polyester fabric for jackets. There is a moderate level for water repellence. The fabric prints with extremely high resolution and rich vibrant colours.



#### ULTRAVIOLET PROTECTION FACTOR

- This fabric complies with AS/NZ 4399:1996
- UPF 35+ (MICROMESH) Rated as “GOOD” sun protection
- UPF 45+ (COTTON BACK) Rated as “EXCELLENT” sun protection



#### HIGH VISIBILITY COMPLIANCE FOR DAY USE

- This fabric complies with AS/NZS 1906.4:1997
- This garment complies with AS/NZS 4602.1999
- Garment is classed highly visible during the day time.



#### HIGH VISIBILITY COMPLIANCE FOR DAY/NIGHT USE

- This fabric complies with AS/NZS 1906.4:1997
- This garment complies with AS/NZS 4602.1999
- Garment is classed highly visible during the day/night time.



#### REFLECTIVE TAPES FOR NIGHT USE

- We use & recommend 3M silver reflective tape (50mm width) for night time use.